



THELON

ELEV B1: 1248 SQ. FT.

ELEV B2: 1252 SQ. FT.



Artist's Concept

B3

B2

B1

B1

B2

B1

B2

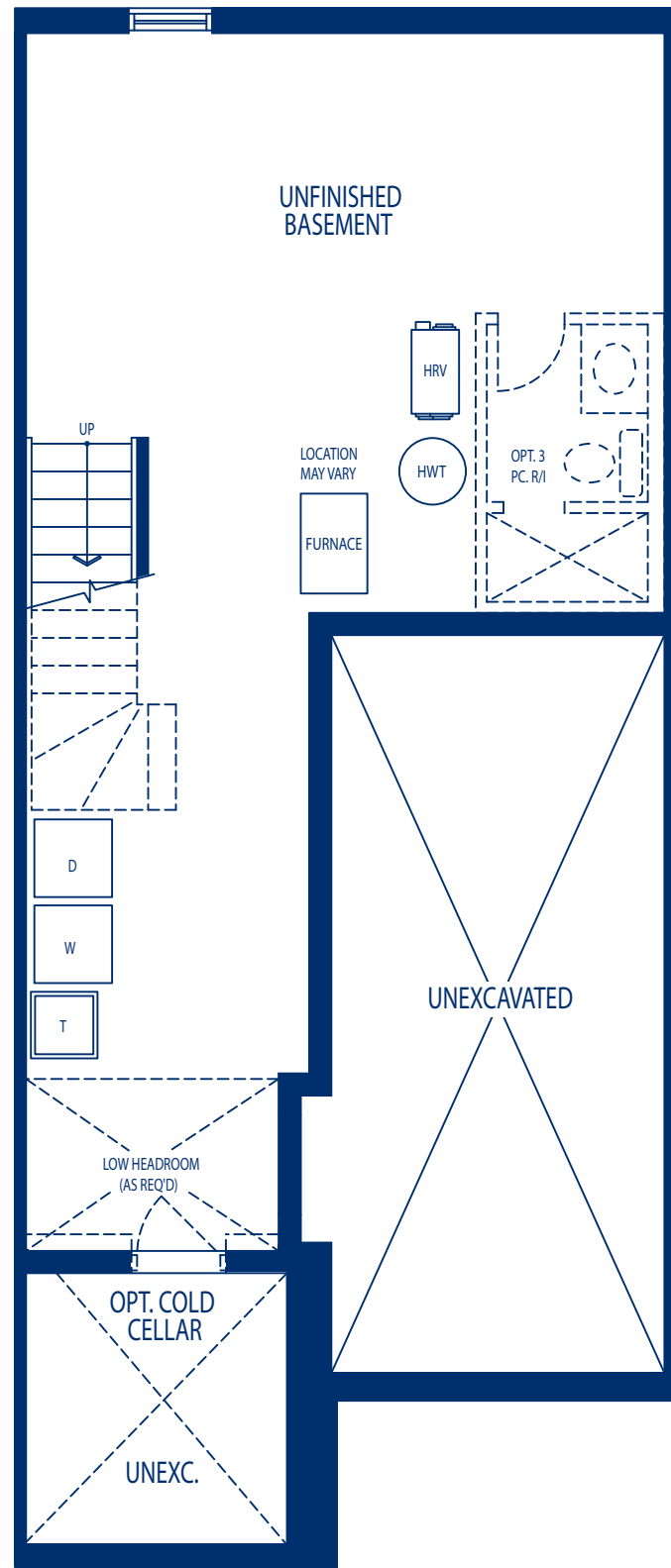
B3



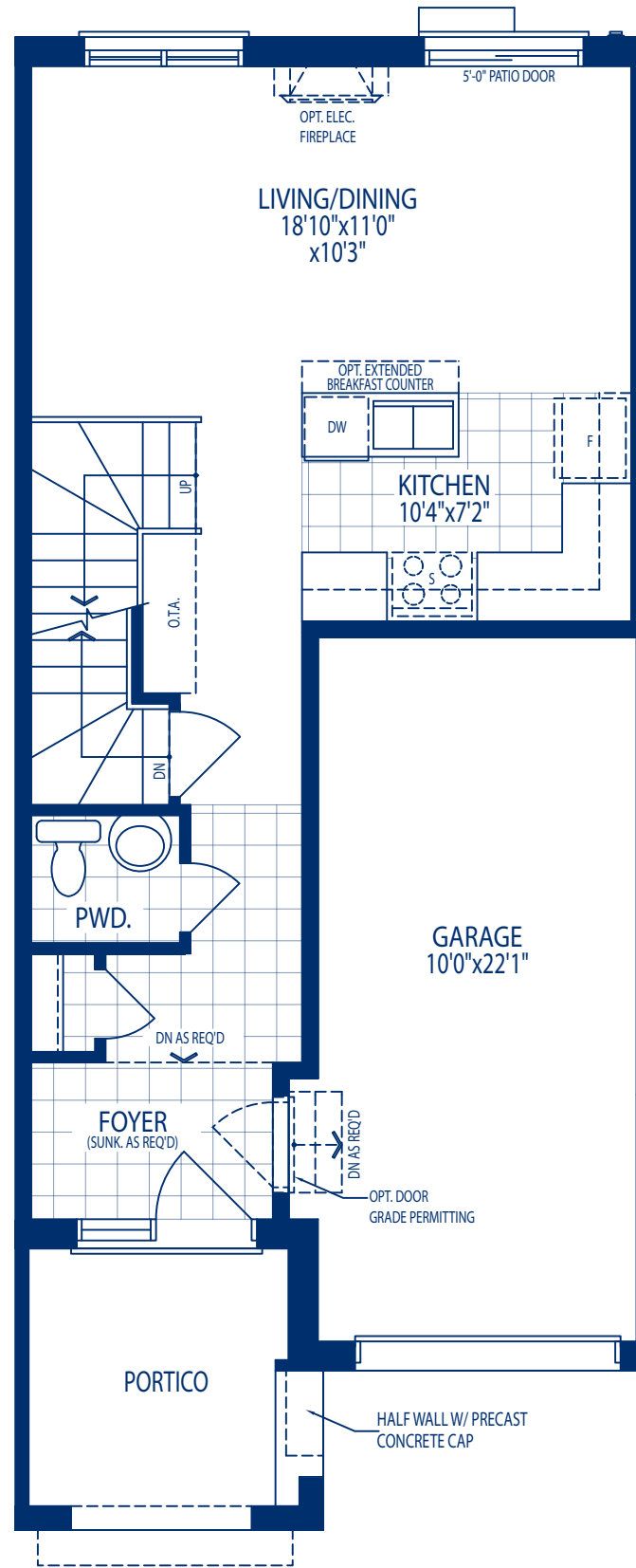
Fernbrook
HOMES

THELON

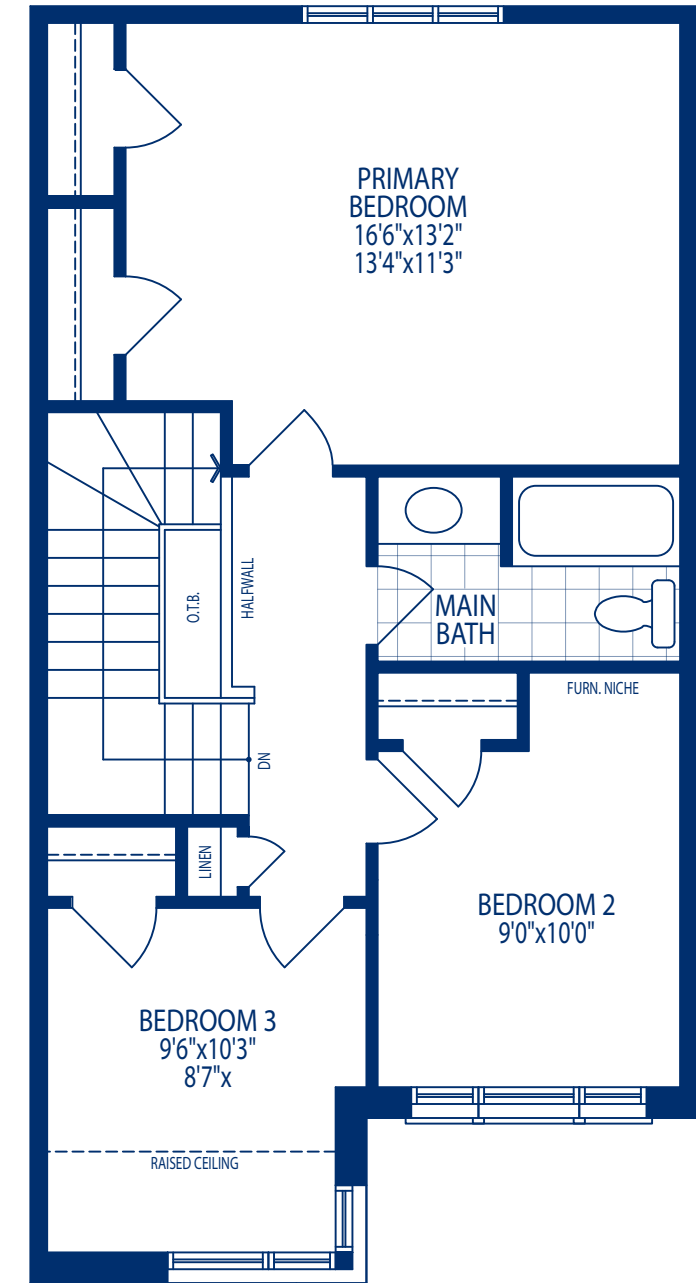
ELEV B1: 1248 SQ. FT. / ELEV B2: 1252 SQ. FT.



**BASEMENT PLAN
ELEV. B1, B2**



**GROUND FLOOR PLAN
ELEV. B1, B2**



**SECOND FLOOR PLAN
ELEV. B1**

The Purchaser acknowledges that all renderings and photographs are artist's concept, for display purposes only and may not be representative of construction details and may contain certain features, upgrade finishes and services which are not included in the standard, or any model type. Floor plans are pre-construction plans, may be revised or improved as necessitated by architectural controls and the construction process. All floor plan dimensions are approximate; actual usable floor space may vary from the stated area. The number of steps at the exterior or interior as shown may vary depending upon grade conditions for individual lots. Plans may be reversed. E. & O. E.





NELSON

ELEV B1: 1431 SQ. FT.

ELEV B2: 1435 SQ. FT.



Artist's Concept

B3

B2

B1

B1

B2

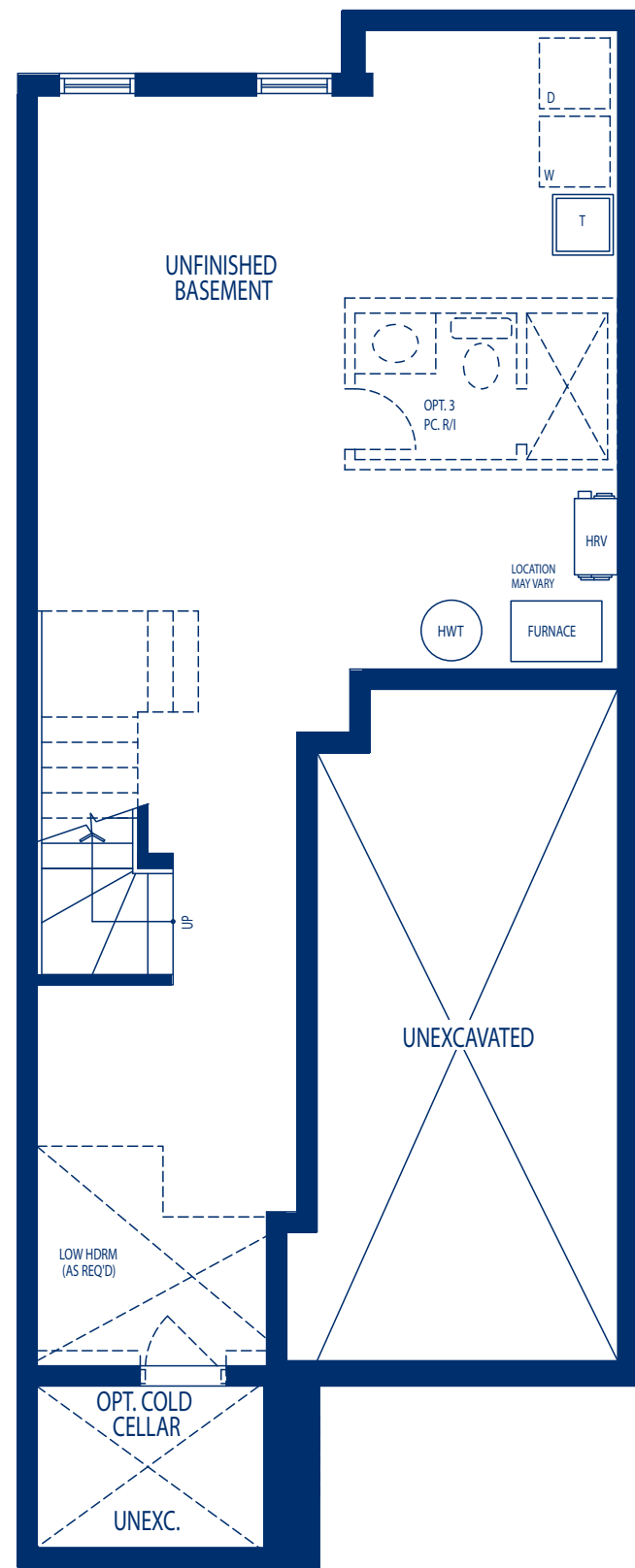
B1

B2

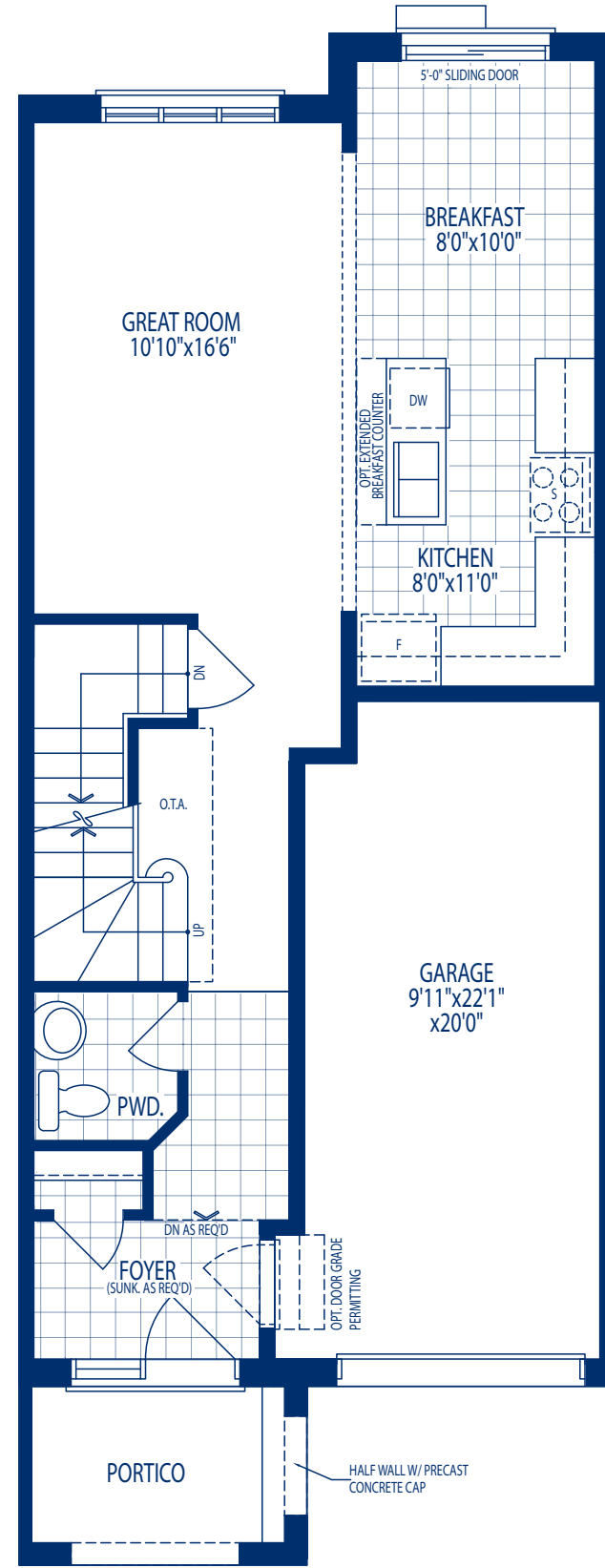
B3



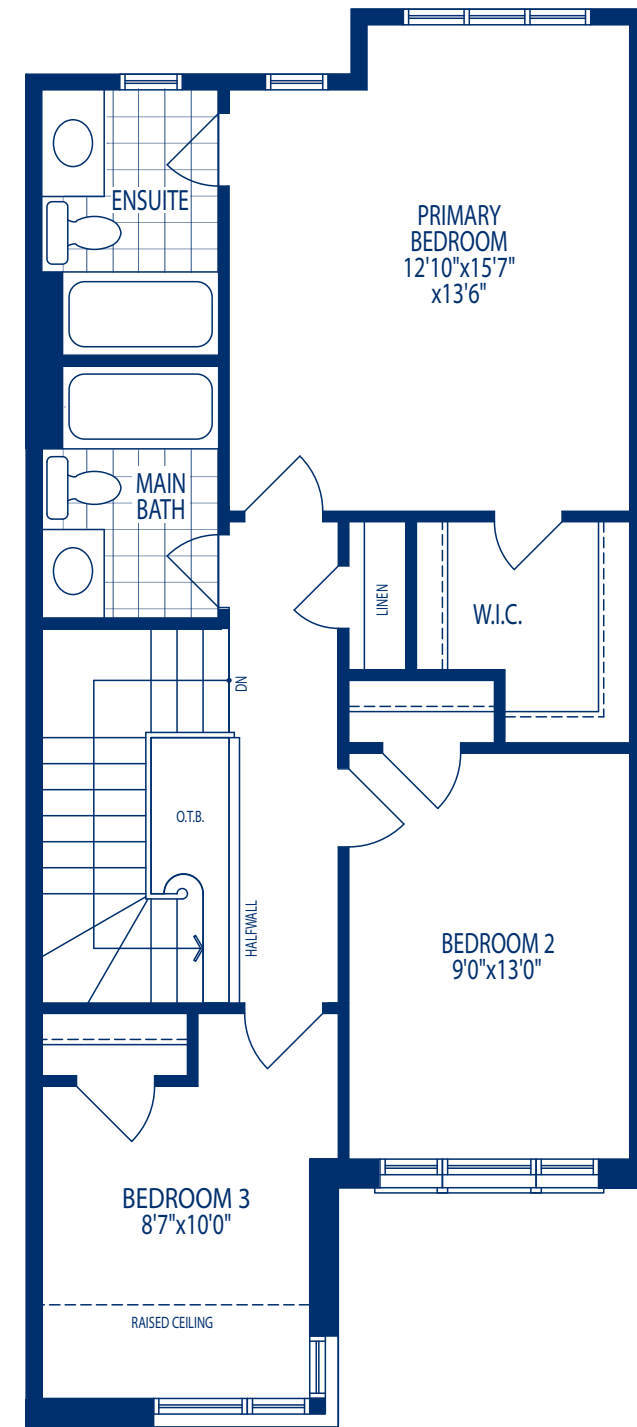
Fernbrook
HOMES



**BASEMENT PLAN
ELEV. B1, B2**



**GROUND FLOOR PLAN
ELEV. B1, B2**



**SECOND FLOOR PLAN
ELEV. B1**





PEACE

ELEV B1: 1694 SQ. FT.

ELEV B2: 1704 SQ. FT.



Artist's Concept

B3

B2

B1

B1

B2

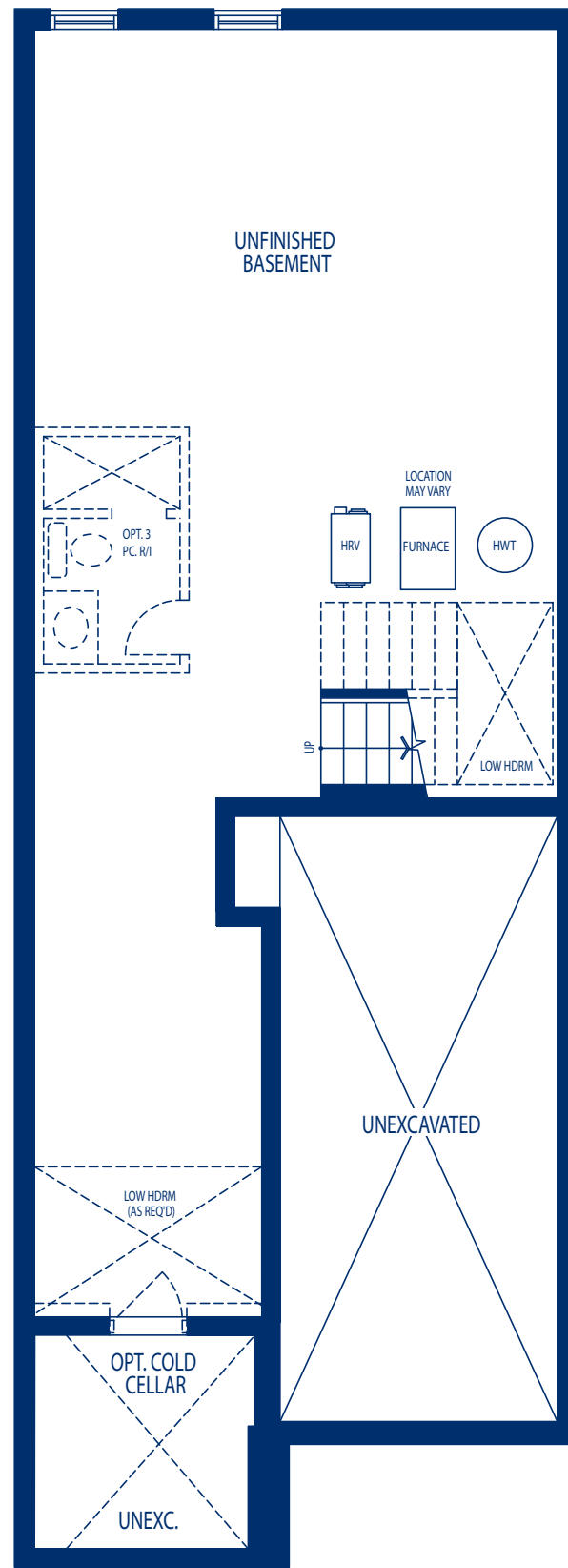
B1

B2

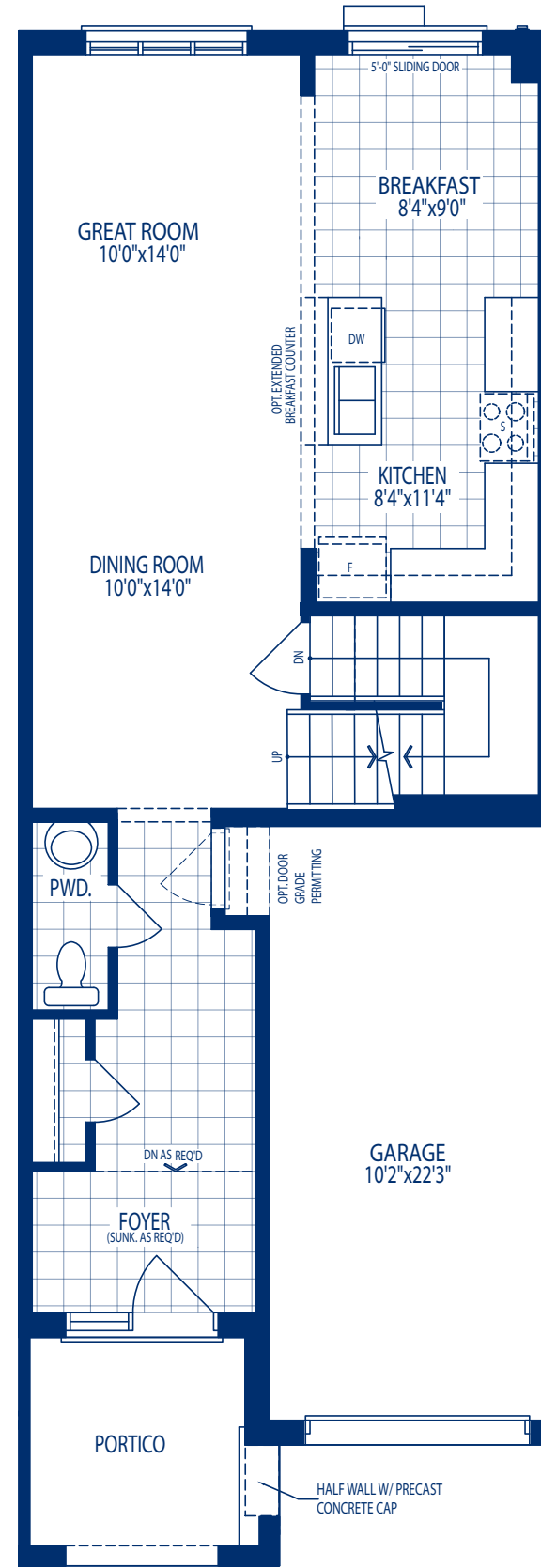
B3



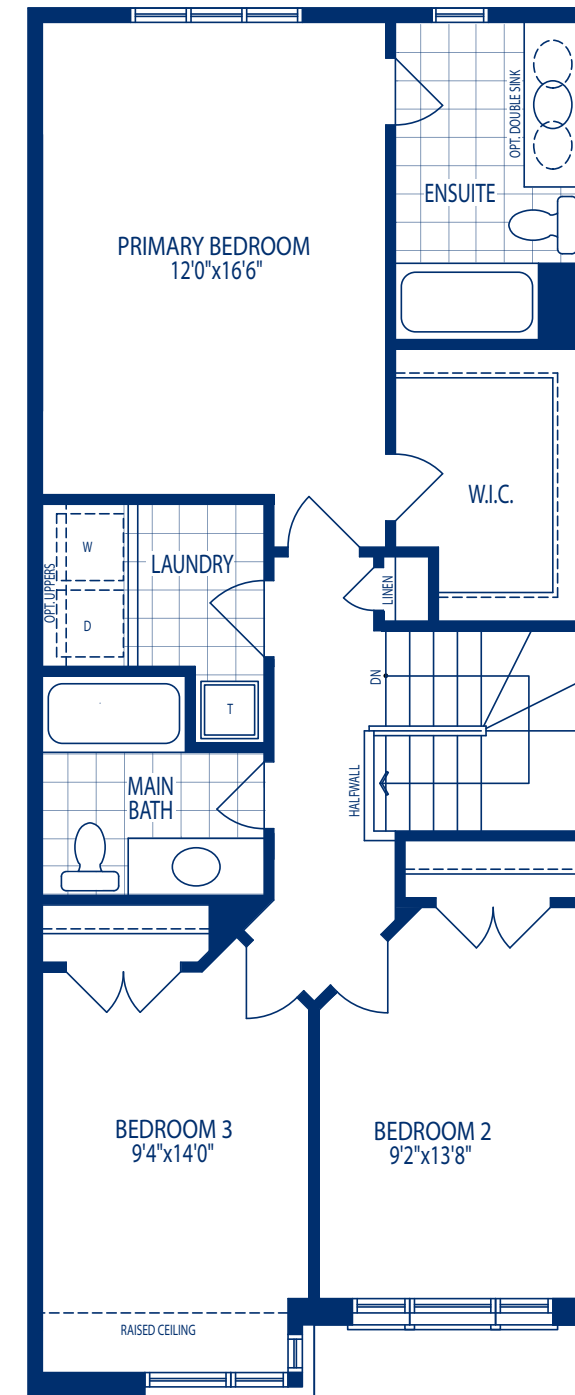
Fernbrook
HOMES



BASEMENT PLAN
ELEV. B1, B2



GROUND FLOOR PLAN
ELEV. B1, B2



SECOND FLOOR PLAN
ELEV. B1



FRASER

ELEV B1: 1787 SQ. FT. / ELEV B2: 1797 SQ. FT.

ELEV B3 END: 1862 SQ. FT. / ELEV. B3 CORNER 1859 SQ.FT.



Artist's Concept

B3

B2

B1

B1

B2

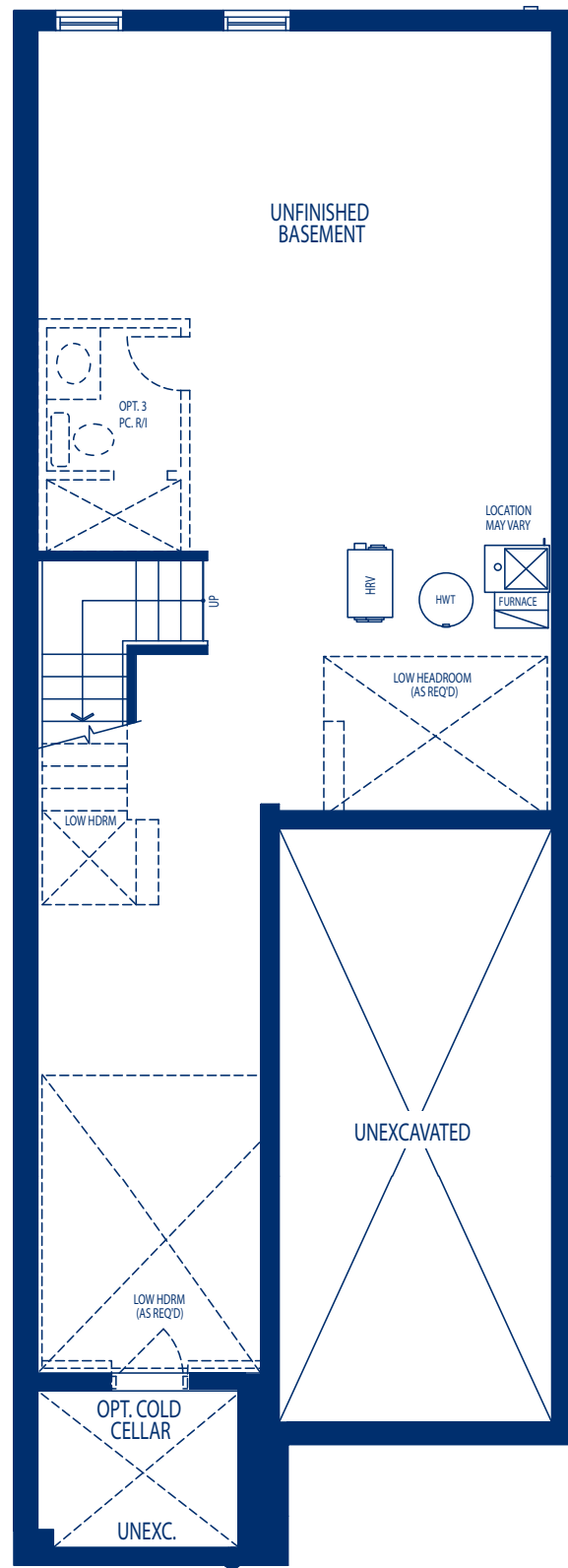
B1

B2

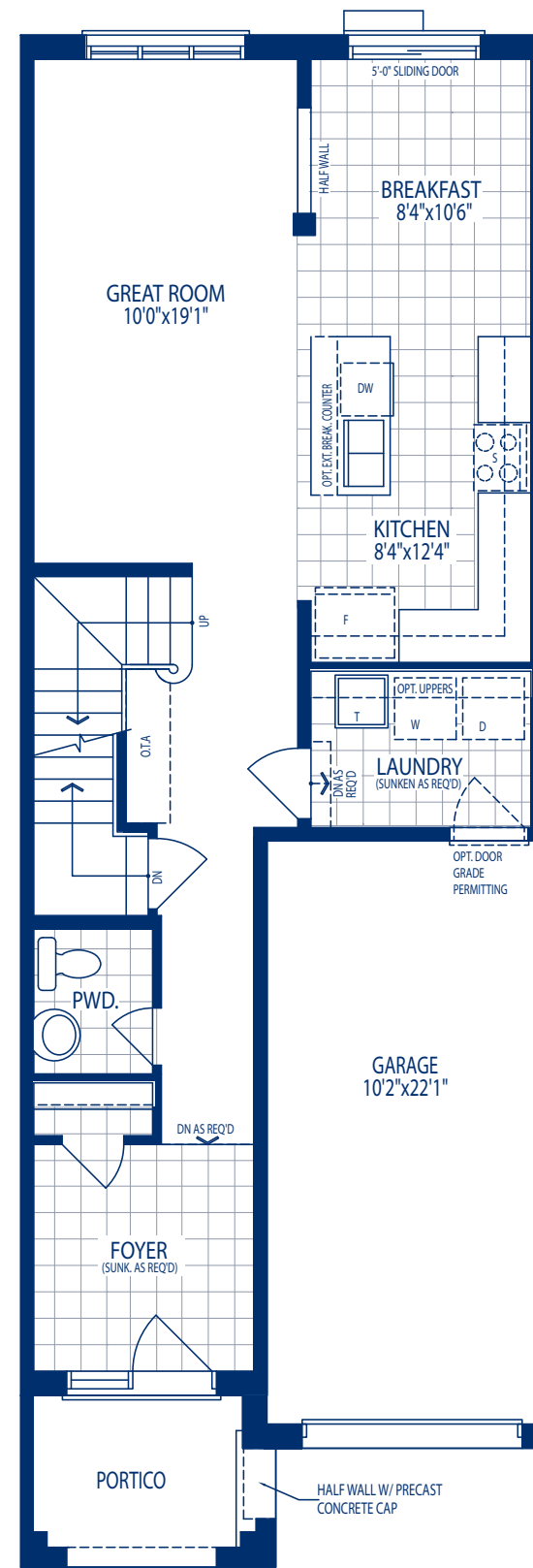
B3



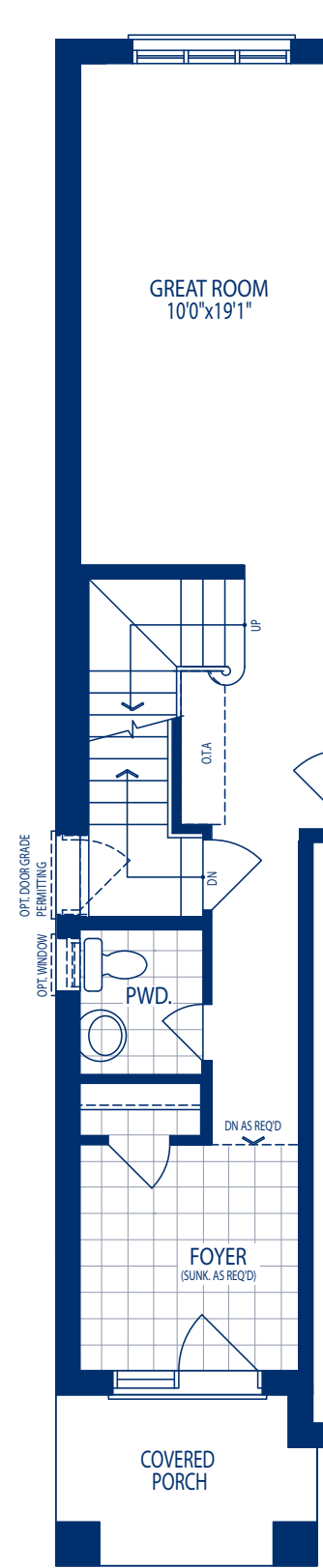
Fernbrook
HOMES



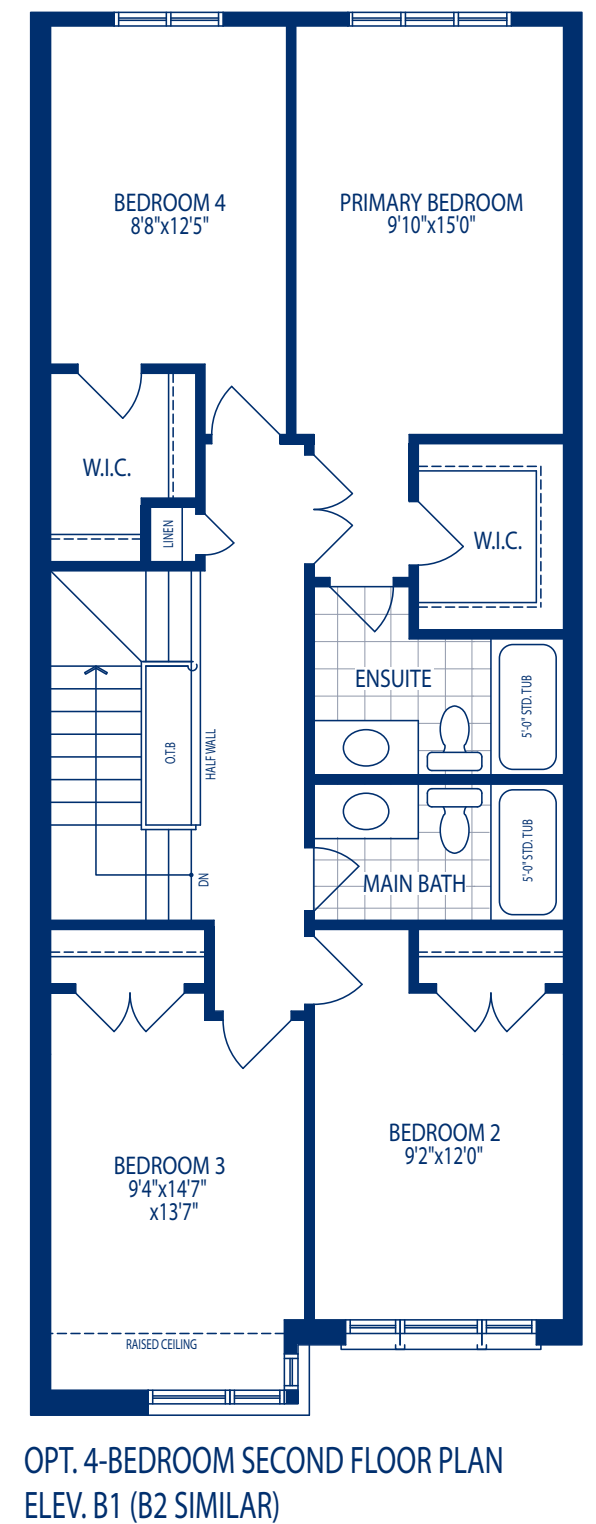
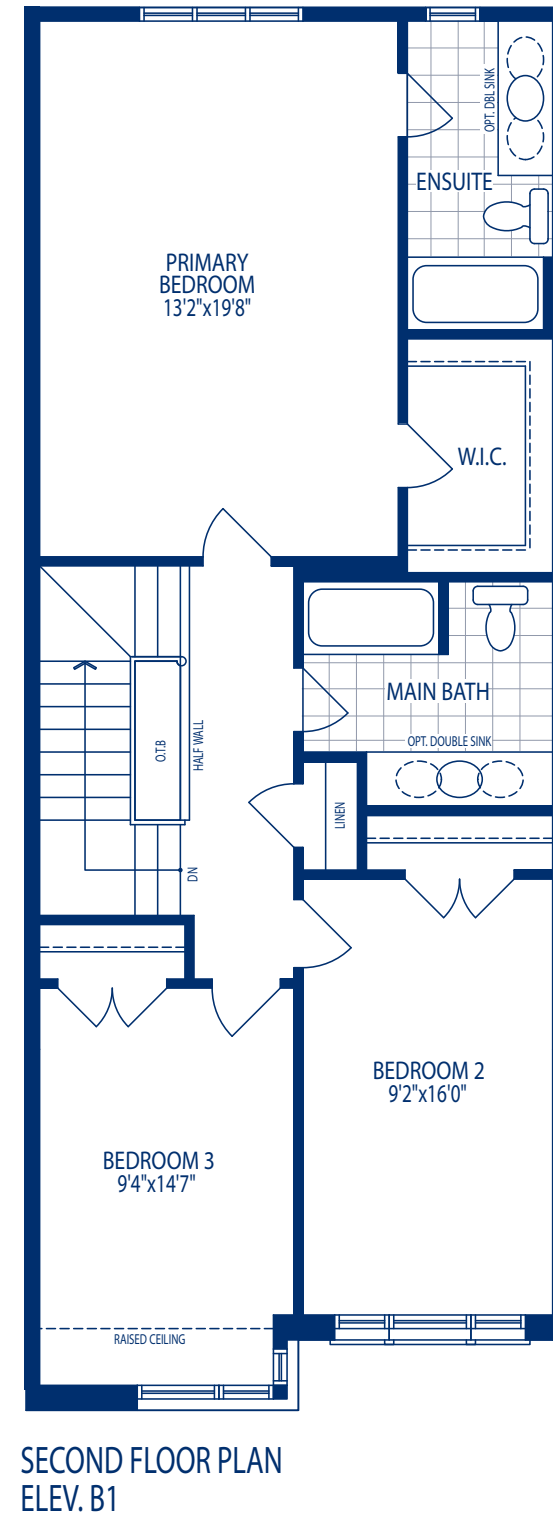
BASEMENT PLAN
ELEV. B1, B2



GROUND FLOOR PLAN
ELEV. B1, B2



GROUND FLOOR PLAN
ELEV. B3 - END CONDITION





SEVERN

ELEV B3 END: 2090 SQ. FT.

ELEV B3 CORNER: 2094 SQ. FT.



Artist's Concept

B3

B2

B1

B1

B2

B1

B2

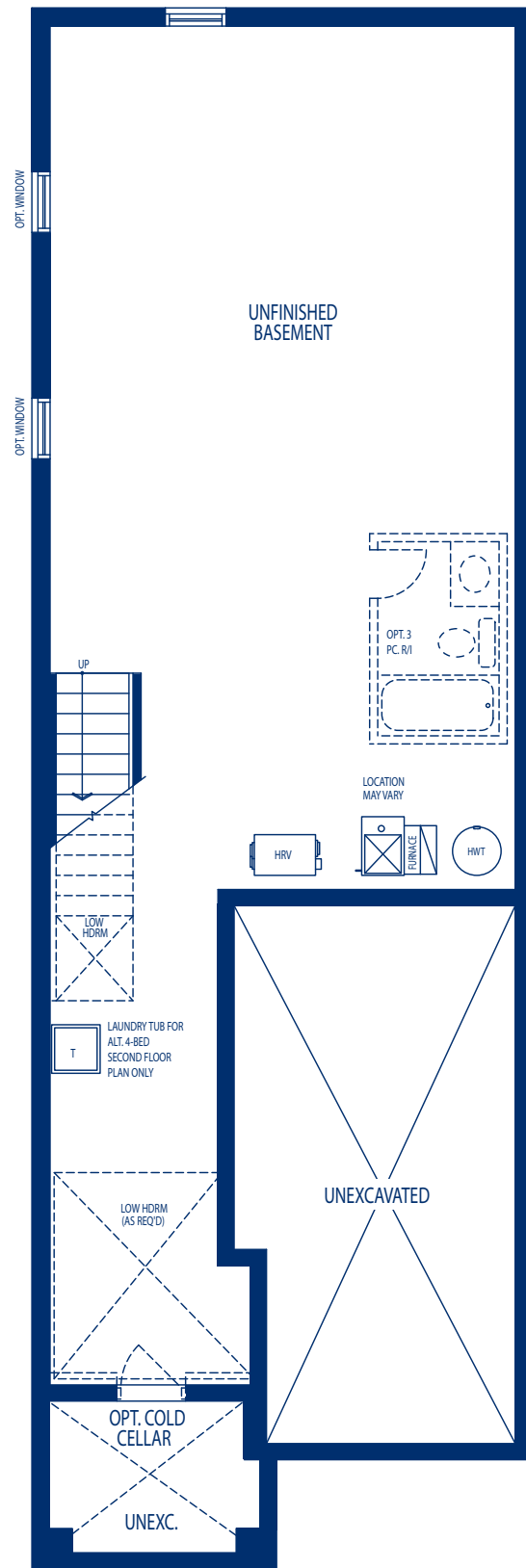
B3



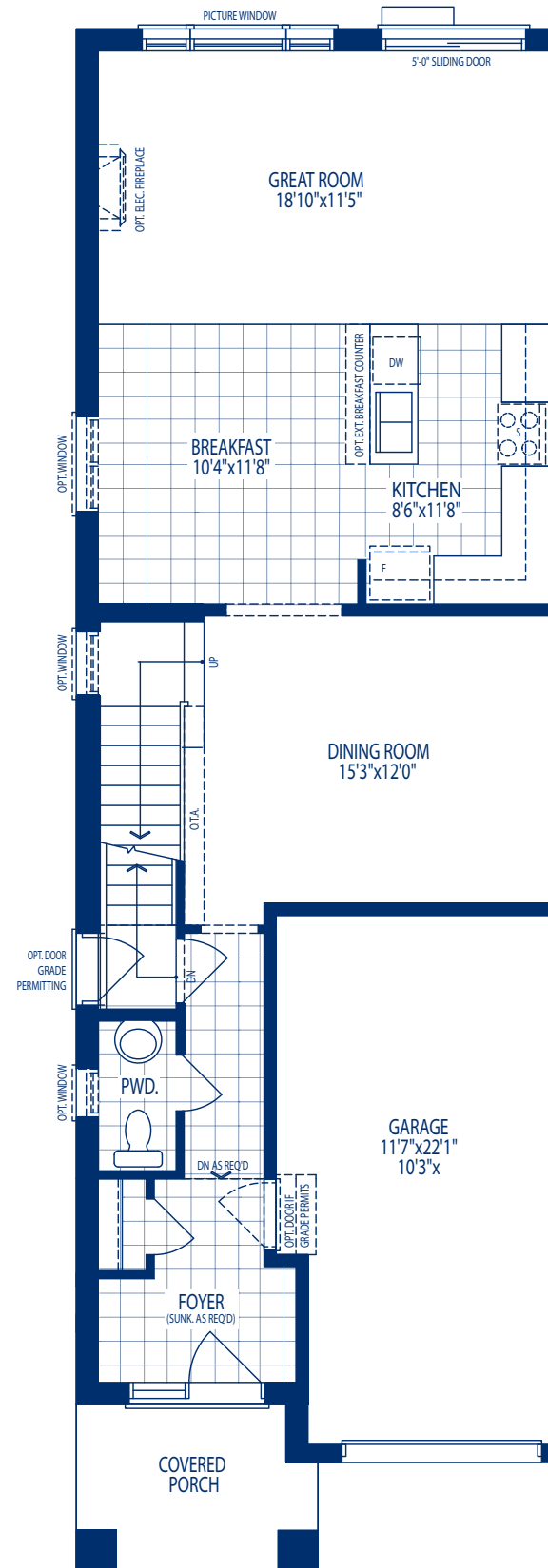
Fernbrook
HOMES

SEVERN

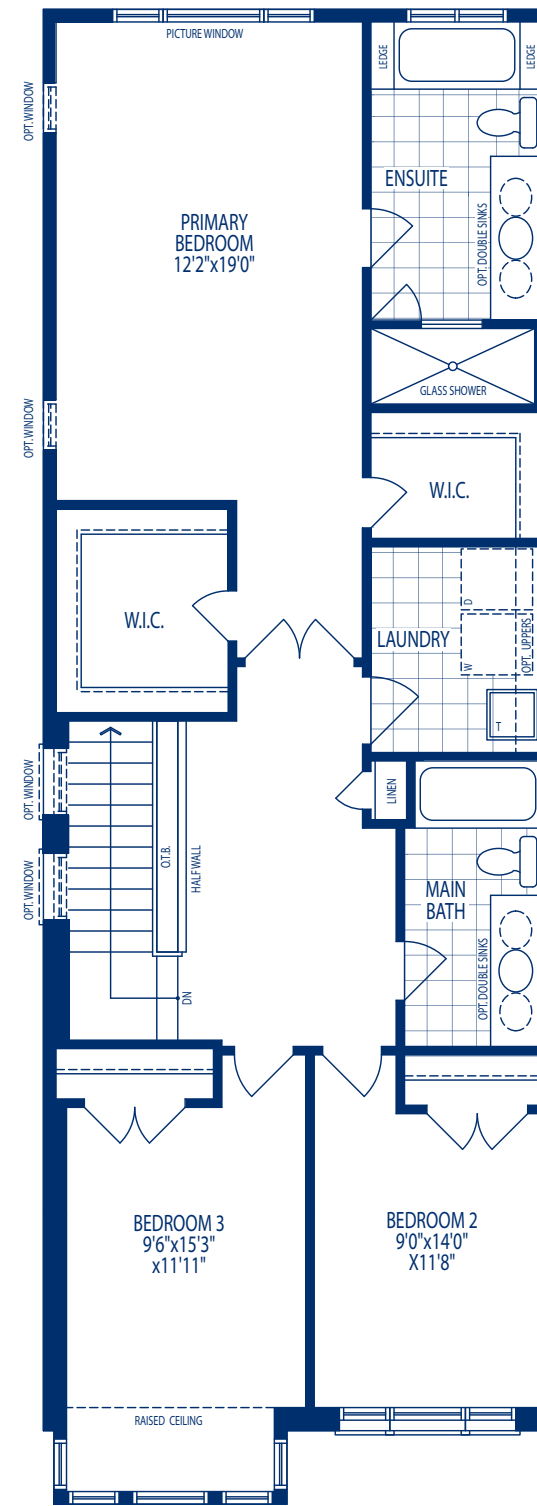
ELEV B3 END: 2090 SQ. FT. / ELEV B3 CORNER: 2094 SQ. FT.



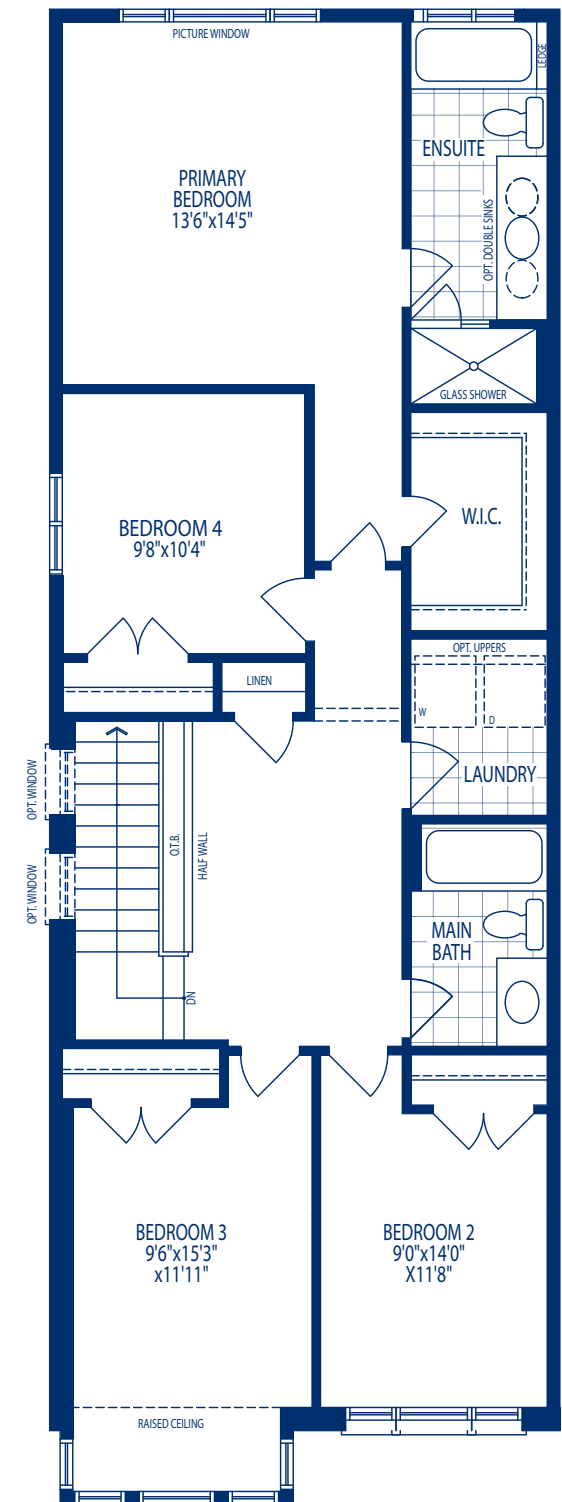
BASEMENT PLAN
ELEV. B3 END COND.



GROUND FLOOR PLAN
ELEV. B3 - END COND.



SECOND FLOOR PLAN
ELEV. B3 - END COND.



SECOND FLOOR PLAN
ELEV. B3 - END COND. ALT. 4 BED

The Purchaser acknowledges that all renderings and photographs are artist's concept, for display purposes only and may not be representative of construction details and may contain certain features, upgrade finishes and services which are not included in the standard, or any model type. Floor plans are pre-construction plans, may be revised or improved as necessitated by architectural controls and the construction process. All floor plan dimensions are approximate; actual usable floor space may vary from the stated area. The number of steps at the exterior or interior as shown may vary depending upon grade conditions for individual lots. Plans may be reversed. E. & O. E.





RIVERSIDE

ELEV B1: 1591 SQ. FT.

ELEV B2: 1595 SQ. FT.



Artist's Concept

B3

B2

B1

B1

B2

B1

B2

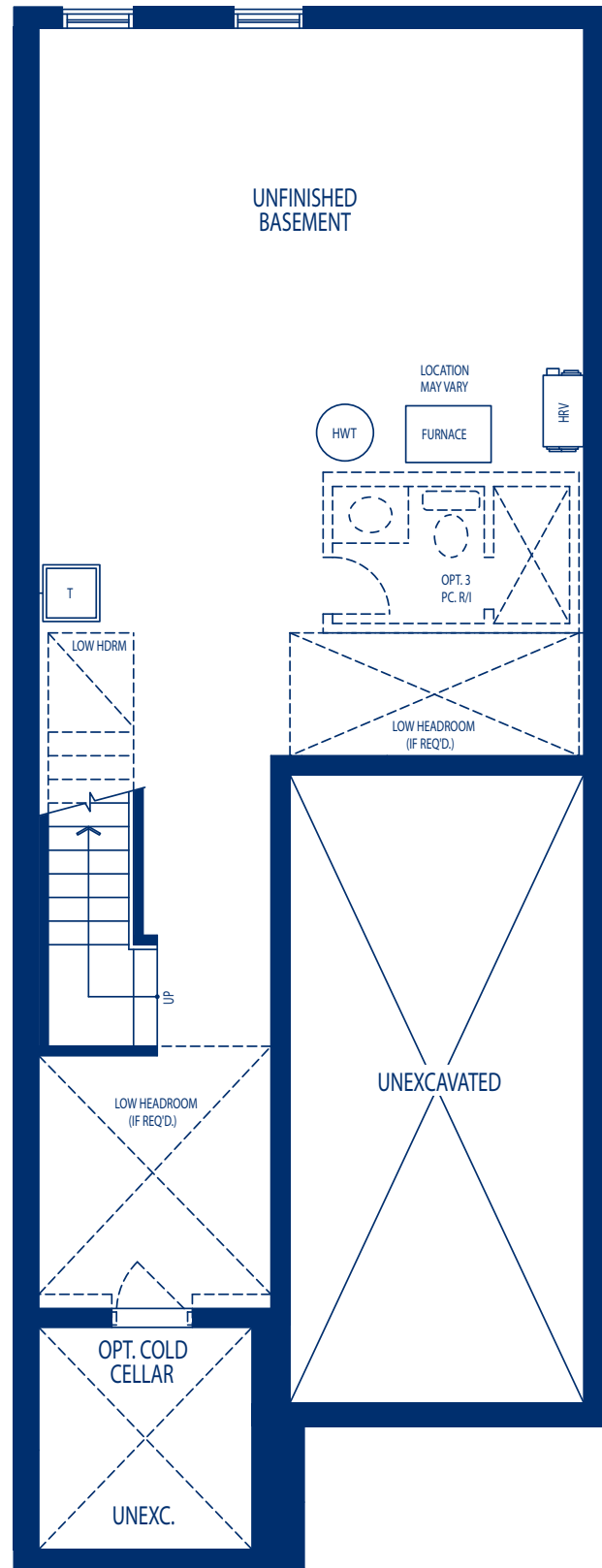
B3



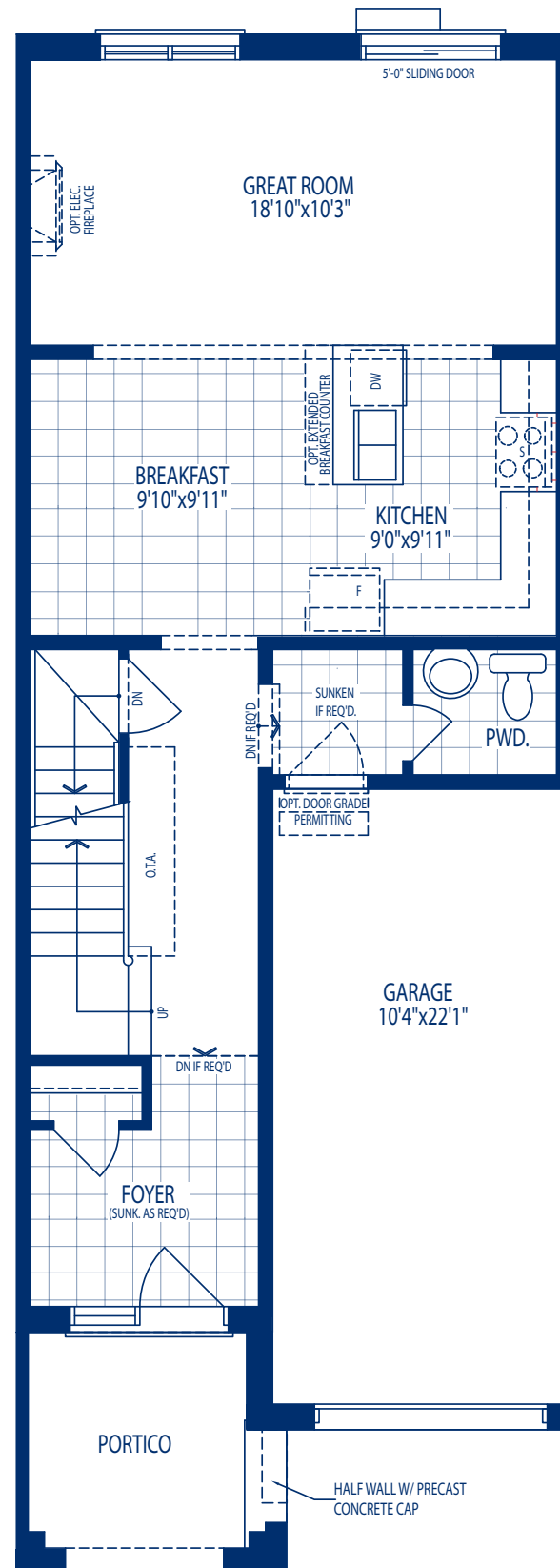
Fernbrook
HOMES

RIVERSIDE

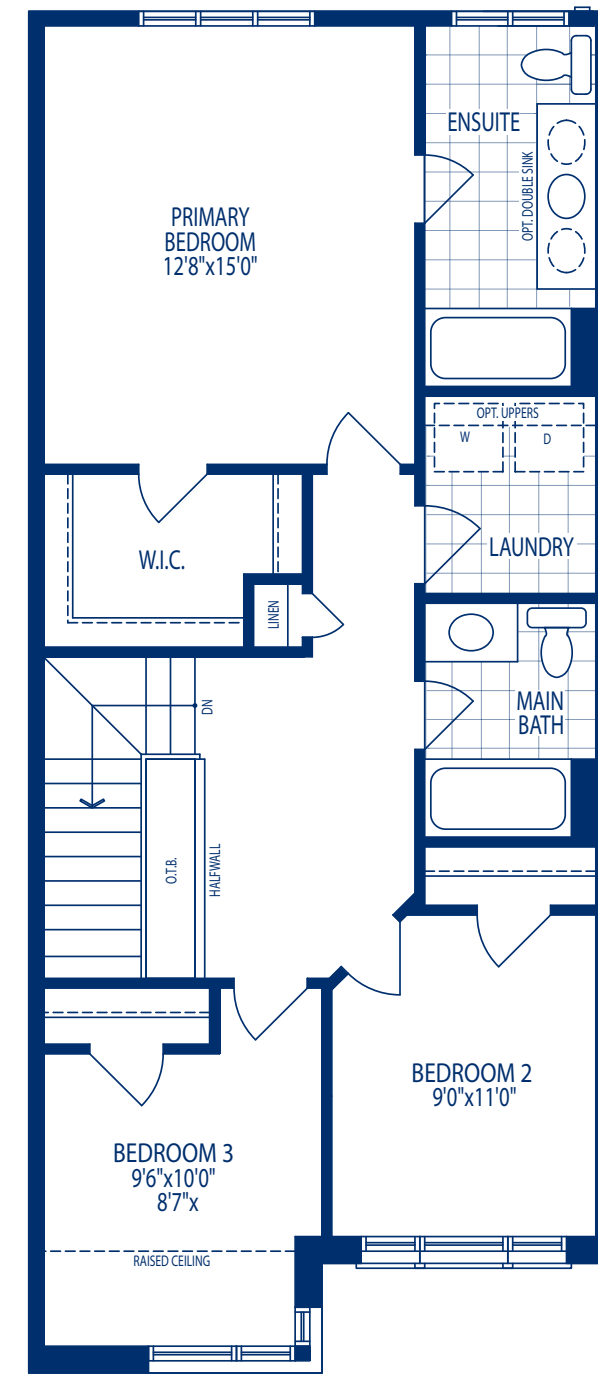
ELEV B1: 1591 SQ. FT. / ELEV B2: 1595 SQ. FT.



BASEMENT PLAN
ELEV. B1, B2



GROUND FLOOR PLAN
ELEV. B1, B2



SECOND FLOOR PLAN
ELEV. B1

The Purchaser acknowledges that all renderings and photographs are artist's concept, for display purposes only and may not be representative of construction details and may contain certain features, upgrade finishes and services which are not included in the standard, or any model type. Floor plans are pre-construction plans, may be revised or improved as necessitated by architectural controls and the construction process. All floor plan dimensions are approximate; actual usable floor space may vary from the stated area. The number of steps at the exterior or interior as shown may vary depending upon grade conditions for individual lots. Plans may be reversed. E. & O. E.

