



Naturally Yours

The One and Only Riverside Community in Paris

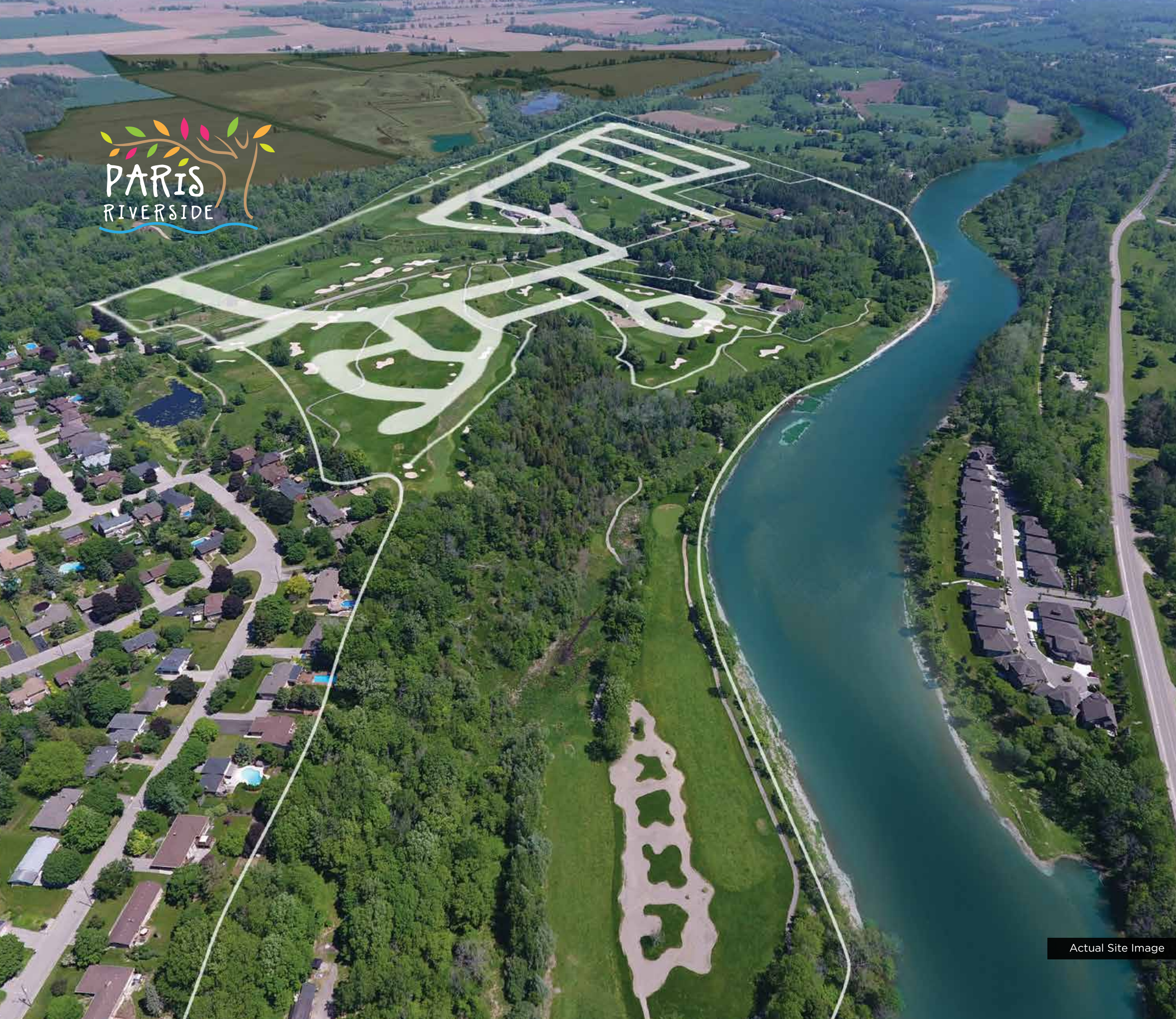
Fernbrook Homes and Crystal Homes are pleased to introduce a new community of elegant family residences situated on the gently rolling forest hills abutting the Grand River in Paris, Ontario. It's a home for those who have dreamed of pristine riverside living, where 5 km of paved walking trails throughout the community connect residents to the water's edge. Every day this setting is naturally yours, when you call Paris Riverside home.





Grand River. Grand Location.

Paris Riverside offers a splendid selection of homes surrounded by over 68 acres of protected riverside greenspace. That's over 45% of this community's 151 total acres! Featuring 2 community ponds and 5 km of community walking/cycling trails, you can enjoy a lake-like atmosphere each and every day. This is a place where families can experience a peaceful enclave lifestyle with limited thoroughfare traffic. A place where the gentle sounds of the river and Gilbert Creek Falls will be your constant companion. At Paris Riverside, you can connect daily right outside your door with a life that is naturally yours.



Actual Site Image



Grand River Living



Fishing, Hiking, Biking & More At Your Door

There's no need to drive to the cottage when you have 68 acres of protected greenspace right in your backyard. Spend your days meeting your woodland neighbours with an abundance of beautiful songbirds and wildlife just waiting to be discovered. Hop in a canoe or kayak and enjoy the beauty of life on the river.

68 ACRES

**OF PROTECTED
RIVERSIDE
GREENSPACE**





Kayaking on The Grand River at Paris Riverside in Paris, ON



Walter Bean Grand River Trail, ON

Hikers and cyclists will enjoy great proximity to the 275 km Grand Valley Trail, which runs from Rock Point Provincial Park on Lake Erie all the way east to Alton, just outside of Orangeville.

The local segment of this trail is also known as the Cambridge to Paris Rail Trail, and is located just across the river from the Paris Riverside community. Residents will also be able to take advantage of some excellent local on-road bike routes, such as the popular “Upper Grand” route, which starts right on Paris Links Road at your door. This is just scratching the surface of the natural beauty to be discovered nearby.

CONNECT TO
275 KM
**OF WALKING/
CYCLING TRAILS**

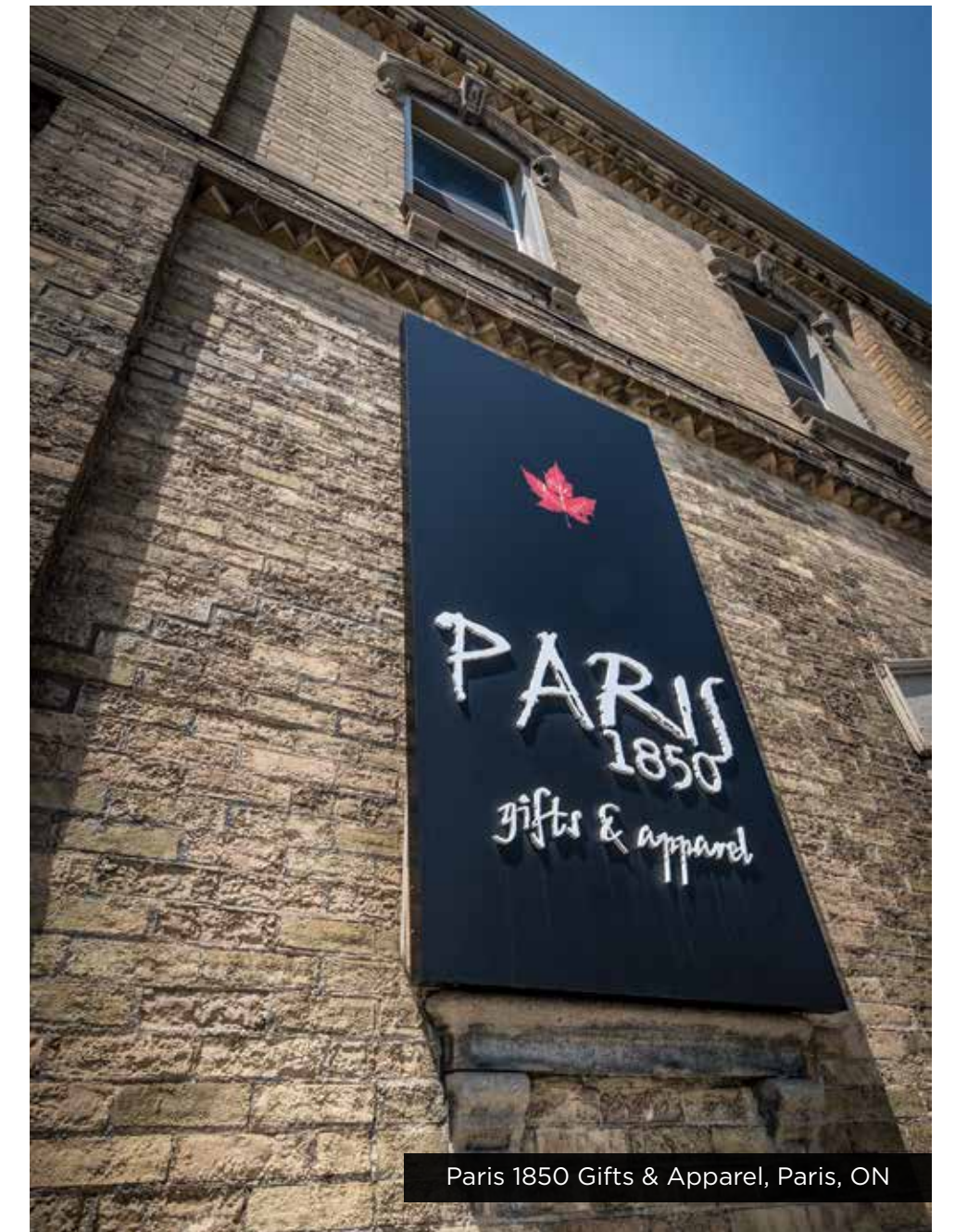


5 KM
**OF WALKING/
CYCLING TRAILS AT
PARIS RIVERSIDE**

“There’s a reason Paris has been called The Prettiest Little Town in Canada.”

There’s a reason Paris has been called “The Prettiest Little Town in Canada”. Much as the town’s namesake in France is situated along the Seine, Paris Ontario is found amidst rolling hills and valleys on the Grand River’s edge. Paris is loved for its beautiful heritage buildings, friendly shops and charming and famous restaurants overlooking the river. You can even stop in at the local favourite Stillwaters Plate & Pour to sample the dishes from Food Network’s Top Chef Canada William Thompson. Have coffee with a view of the Grand. Life may move at a more relaxed pace here, but there is also no shortage of local amenities to enjoy. With major big box retailers such as Canadian Tire right up the street, and even more shopping and dining in nearby Brantford, you’ll be amazed by the big city convenience that can still be yours in Canada’s prettiest little town.

When you live in one of the region’s top sightseeing destinations, every day can feel like a vacation. Relax on a riverside patio, discover beautiful heritage architecture and fall in love with life in Canada’s prettiest little town.



Paris 1850 Gifts & Apparel, Paris, ON



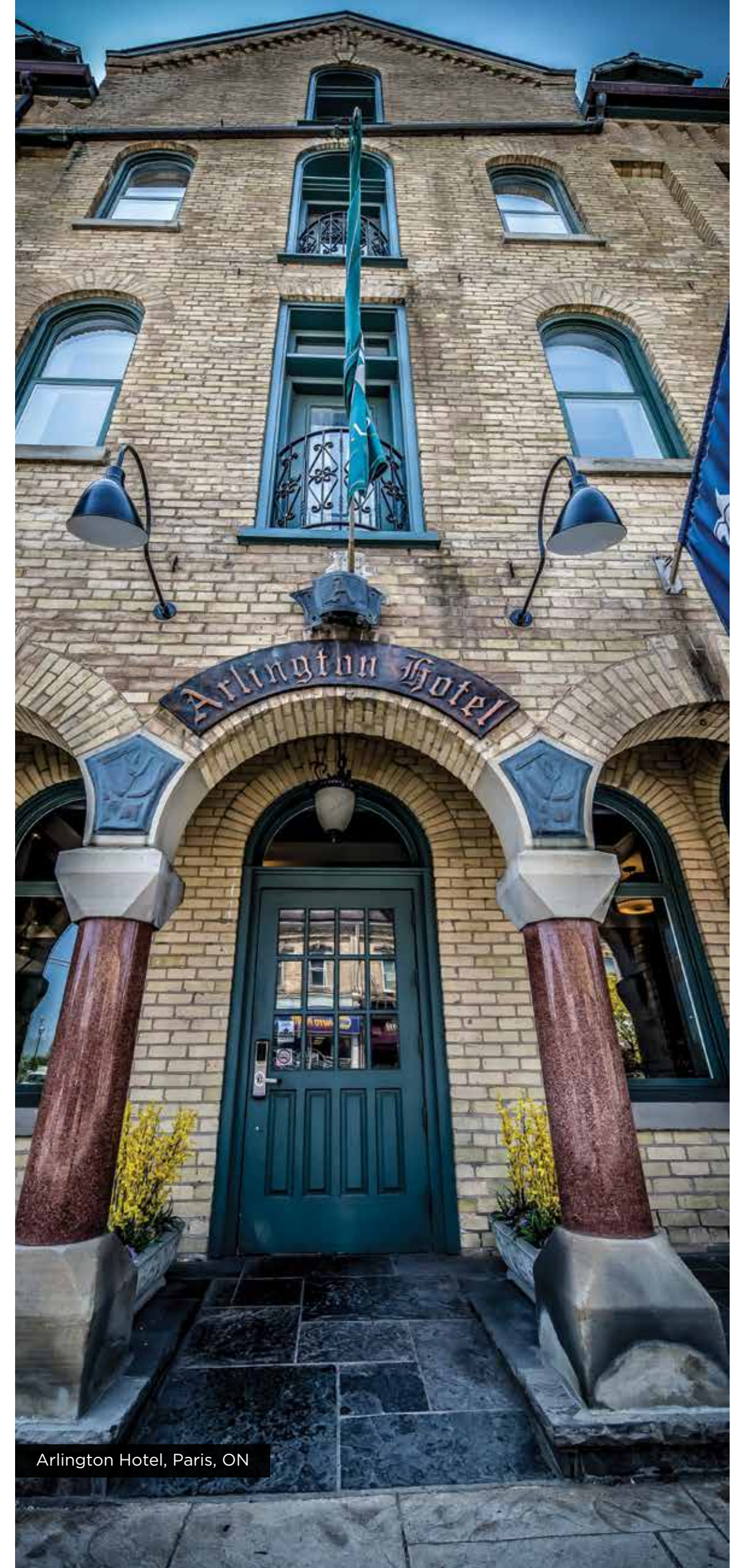
Grand River, Paris, ON



Chocolate Sensations, Paris, ON



Paris Bakery, Paris, ON



Arlington Hotel, Paris, ON



Schools, Parks, Golf & Playgrounds Nearby

In addition to beautiful natural amenities, Paris Riverside gives you access to essential places for your family to play, learn and grow.

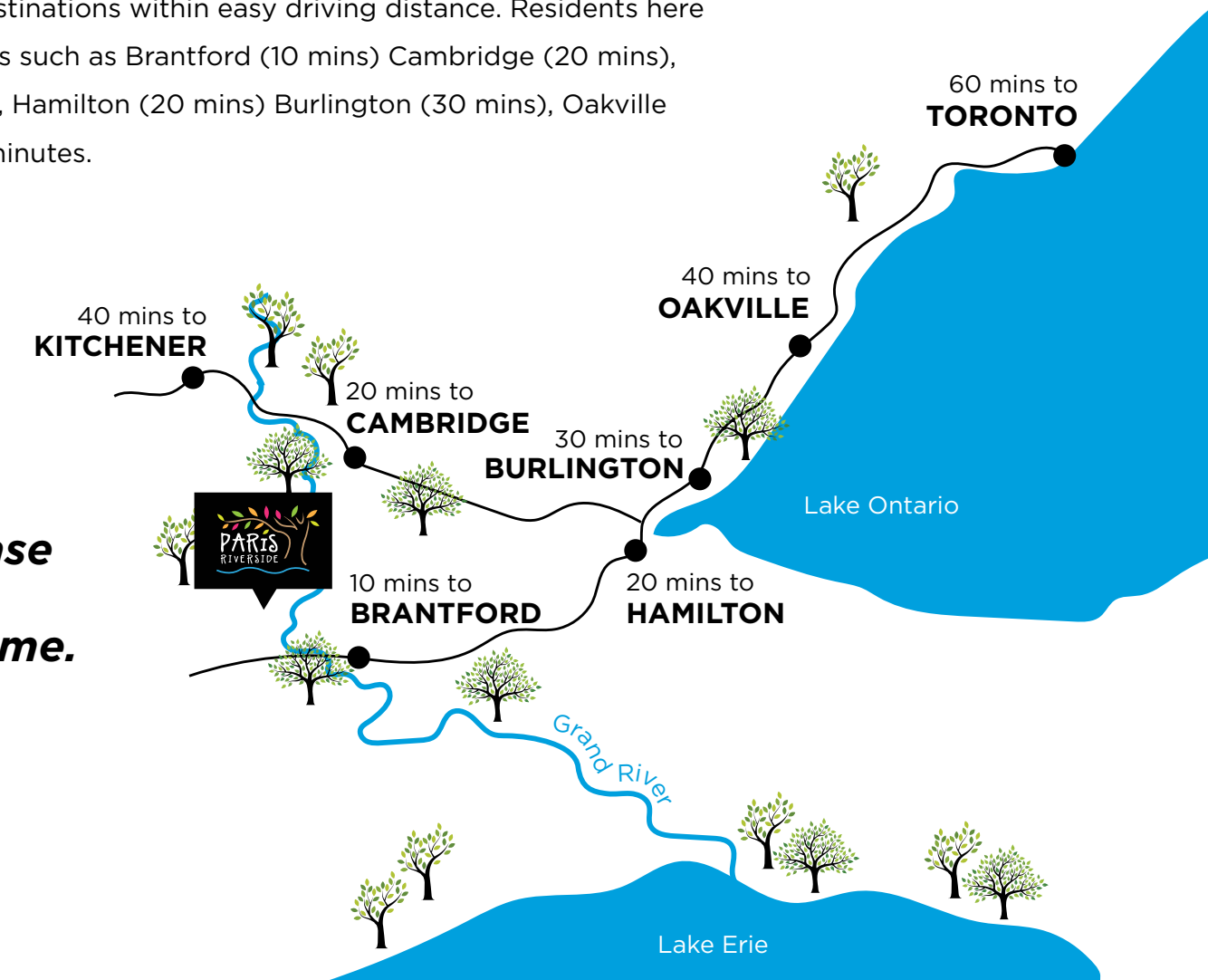
There are several schools just minutes away, including Paris District High School, Holy Family School and North Ward School. There are also beautiful parklands and playgrounds where the kids will love spending their days. When the grown-ups want to play, the surrounding countryside is filled with beautiful and challenging private and public golf courses to enjoy.



Perfect for Commuters

Paris Riverside is also a highly commuter friendly location, with many major employment and shopping destinations within easy driving distance. Residents here can enjoy rapid travel to places such as Brantford (10 mins) Cambridge (20 mins), Kitchener/Waterloo (40 mins), Hamilton (20 mins) Burlington (30 mins), Oakville (40 mins) and Toronto in 60 minutes.

Travel across the region with ease when you call Paris Riverside home.





FRENCH SECOND EMPIRE



CANADIANA COUNTRY



MODERN TRANSITIONAL



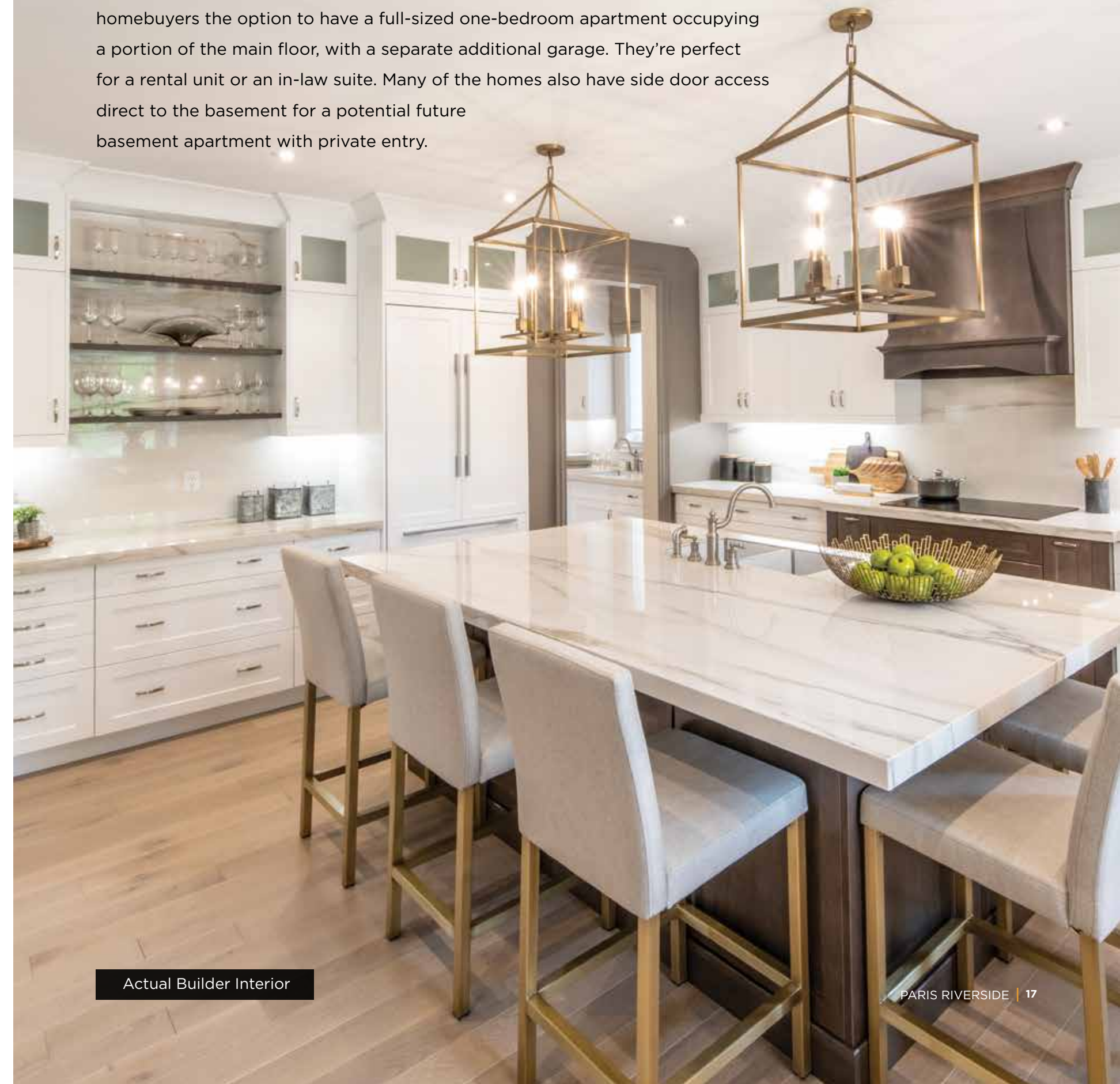
Prestige Architecture

Each home at Paris Riverside perfectly complements this beautiful riverside setting. Large exterior windows let the outside in and permeate the home with natural light. Three distinctive home styles create the unique personality of this community: French Second Empire, Canadiana Country and Modern Transitional. Each style offers its own definitive feeling and experience of home. The French Second Empire designs find their inspiration in the many hallmark historical homes that give Paris its unique heritage ambiance. Canadiana Country boasts friendly porches and classic gables reminiscent of many of the area's rural farmhouses. While these first two styles pay homage to Paris's past, the Modern Transitional looks forward to the town's vibrant future with large picture and corner windows articulating a distinctively contemporary look. With flexible home plans available in every style, this community truly has something for all. Townhomes, bungalows and 2-storey detached residences mean that everyone from first-time buyers and growing families, to older couples can find their perfectly designed home here.

Each home at Paris Riverside perfectly compliments this beautiful riverside setting.

Superior Interiors

Inside, homes boast all the modern features that families are sure to appreciate. These beautiful interiors find their inspiration in the wide open natural spaces that are naturally yours. Open-concept main floors. Beautifully appointed kitchens. Spacious bedrooms. Elegant master suites. These are the ingredients of perfected family living at Paris Riverside. The community even boasts select home plans with a unique flex home design that offers "two-homes in one". These innovative plans provide homebuyers the option to have a full-sized one-bedroom apartment occupying a portion of the main floor, with a separate additional garage. They're perfect for a rental unit or an in-law suite. Many of the homes also have side door access direct to the basement for a potential future basement apartment with private entry.



Actual Builder Interior



Partners For Nature. Partners For Home.



At Crystal Homes, we are deeply involved in every facet of new home community development. We believe that truly exceptional communities require inspiration and vision. Taking our inspiration from our homeowners' aspirations, we envision new home communities with extraordinary amenities and distinctive homes and streetscapes, complementing the surrounding environment and integrated with nature. To achieve our vision, we are involved in everything, and in every aspect of a community's development, from land acquisition, to neighbourhood planning and innovative home design. Our approach has helped us to build thousands of finely crafted residences in acclaimed communities across Southern Ontario.

Total homeowner satisfaction is the driving motivation behind every aspect of what we do. Our process begins by considering the families that are going to live in each of our signature homes and communities. Our design team strives to create spaces based on a deep understanding of today's homebuyer needs and preferences. Then, our dedicated craftsmen bring our home visions to life with the greatest of care. In this way, we see every new community we create as a journey. A journey that culminates in your family's many happy years in your new home.

We look forward to sharing this unique experience of home with you.



Fernbrook Homes is one of Canada's leading builders and is widely recognized for their outstanding commitment to creating distinctive communities. With a keen natural understanding of what makes a community a preferred place to live, Fernbrook has an exceptional reputation for architectural integrity, classic design and outstanding customer service.

The list of distinctive Fernbrook communities is extensive, with The Chateaus in the Highlands of Castlemore, Joshua Creek, Bronte Creek and Millstone on the Park in Oakville, Stonebridge in Aurora, Fontainbleu in Richmond Hill, Grand Central in Bradford, Coronation in Thornhill, Castle Springs in Vaughan and Cornerstone in Burlington as just a few examples. Fernbrook's trademark communities extend right across the Greater Toronto Area and beyond.

Fernbrook is proud of their commitment to complete customer satisfaction and the company stands behind this promise with a dependable and responsive warranty program.

Come discover a lifetime of satisfaction awaiting you here.

Come Home to Riverside

