

2/F - 5/F



Type: 1J
Area: 522 sf

Type: 2A+M
Area: 740 sf

Type: 2A+M
Area: 740 sf

Type: 2A+M
Area: 740 sf

Type: 2B+M
Area: 731 sf

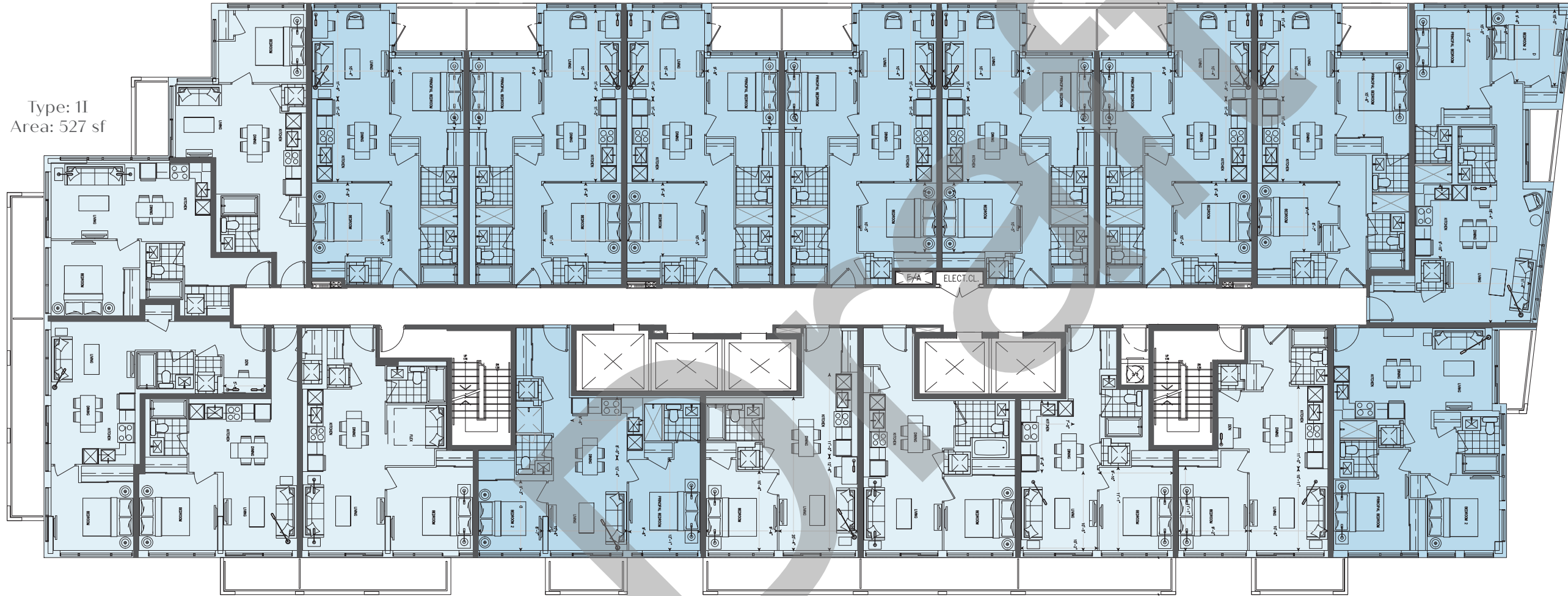
Type: 2B+M
Area: 731 sf

Type: 2A+M
Area: 740 sf

Type: 2C+M
Area: 732 sf

Type: 2D+M
Area: 842 sf

Type: 1I
Area: 527 sf



Type: 1H+D
Area: 593 sf

Type: 1G
Area: 538 sf

Type: 1F+F
Area: 613 sf

Type: 2F
Area: 722 sf

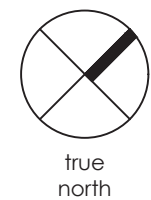
Type: 1D+M
Area: 545 sf

Type: 1C
Area: 535 sf

Type: 1B
Area: 521 sf

Type: 1A+D
Area: 547 sf

Type: 2E
Area: 726 sf



true north



construction north